

Fixing Options



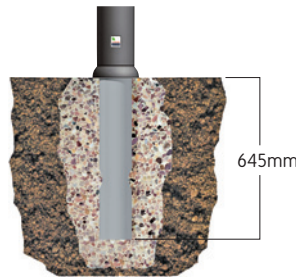
Leaffield has four fixing types for a choice of the best installation method for the customer and the environment in which the bollard will be installed; permanent in-ground, surface mounted, anti-ram or removable socketed version.

Bollards

Anti-Ram

A robust steel core, permanently concreted into the ground provides an effective deterrent to ram-raid.

Depth below ground: 645mm



Permanent

For permanent fixing, the bollard is manufactured with additional base unit as a one-piece moulding. The base of the bollard is concreted-in below ground. The lip at the base ensures that the bollard cannot be removed.

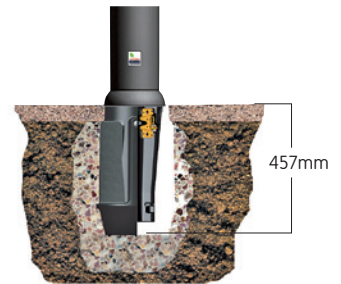
Depth below ground: 400mm



Socketed

Socketed fixing is ideal for use in applications where occasional replacement or removal may be required, the socketed system ensures secure fixing yet allows for easy removal when necessary.

Depth below ground: 457mm



Surface Mounted

Surface fixing is ideal for use in multi-storey car parks, on bridges and in any applications where below ground services or surface membranes may be vulnerable.



Night Owls

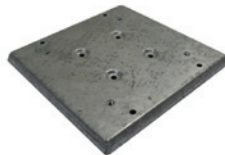
Bounce Back Base

The Night Owl Keep Left Bollard is fixed in place using the dome shaped Bounce-Back Base. The base is in turn fixed in the ground by one of the following three methods.



Adapter Plate

Available in fixing onto existing mounting.



Standard

Standard fixing onto existing concrete using four shield anchors, stainless steel bolts and load spreading washers.



Concrete-in

Ground anchor for use below ground level where new in-situ concrete is used.



Email us...
highways@leaffieldenv.com

...or visit us at
leaffieldhighway.com



[twitter.com/
L_Highway](https://twitter.com/L_Highway)



[linkedin.com/company/
leaffieldhighways](https://linkedin.com/company/leaffieldhighways)